

2016 LAKE CHAMPLAIN VIPER 640 REGATTA
Saturday Sept 24 & Sunday Sept 25
Lake Champlain Yacht Club
2790 Harbor Road
Shelburne VT 05482
<http://lcyf.info>

NOTICE OF RACE

1 RULES

- 1.1 This regatta shall be governed by the rules as defined in *The Racing Rules of Sailing* (RRS) and the Viper 640 Class rules.
- 1.2 All relevant US Sailing prescriptions will apply.
- 1.3 The following RRS will be changed; the Sailing Instructions may also change other racing rules:
- When the AP signal is displayed ashore, ‘1 minute’ is replaced with ‘not less than 60 minutes.’ This changes Signal Flag AP.
 - A boat starting more than 10 minutes after the starting signal will be scored DNS. This changes RRS A4.
 - RRS A4 is altered to allow the exclusion of a boat’s worst score if five or more races have been completed.
 - The time limit to deliver protests to the race office shall be no later than 60 minutes after the race committee docks. This refines RRS 61.3.
 - Selected parts of Appendix T *Alternative Procedures for Dispute Resolution* will be used. Section A *Penalties While Racing*, and Section B *Post Race Penalties* will be used. This changes RRS 44.1.
 - The decision to use either Section C *Expedited Hearings* or Section D *Arbitration* will be made before the Sailing Instructions are posted. This would change RRS Part 5, Section B.

2 ELIGIBILITY AND ENTRY

- 2.1 The Regatta is open to all boats of the Viper 640 class.
- 2.2 Boats may register and pay the regatta fee online through Thursday Sept 22 or in person at LCYC beginning Friday Sept 23.
- 2.3 Event information and registration at http://lcyf.info/racing/viper_640
- 2.4 Someone from LCYC will be at the club on Friday Sept 23 between 1000 & 2000 and Saturday morning to welcome racers and direct them to their parking spot. LCYC has room for all anticipated cars-with-trailer. Club grounds are open at all hours. Racers expecting to arrive after 2000 Friday night should notify Dale Hyerstay of their expected time of arrival so we can have someone on-site to greet and assist you.

2.5 Directions to LCYC are available on the LCYC website.

2.6 Limited housing with LCYC members may be available first-come first-served. Instructions for that, and other lodging options, will be listed in the ‘General Information’ document.

3 FEES

3.1 The Regatta fee is \$120 per boat, and must be paid as part of Registration.

3.2 The above fee includes a bagel breakfast on Saturday and Sunday and a come-as-you-are buffet dinner for skipper and two crew at the club Saturday about 1800. The meal price for additional crew and guests will be \$5 per breakfast and \$15 for dinner.

4 SCHEDULE OF RACES

4.1 Probable Race Schedule (final will be in Sailing Instructions):

Saturday	24 Sept	0730	Bagel breakfast at clubhouse
			On-site registration / Rig / Launch
		1000	Competitors’ meeting
		1030	Harbor start
		1130	Warning signal for first race
		1730-ish	Buffet dinner at clubhouse
Sunday	25 Sept	0730	Bagel breakfast at clubhouse
		1000	Warning signal for first race
		1430	No warning signal after this time

4.2 As many races as possible will be held each day.

4.3 For races starting after the first race each day the Race committee will signal its intent to start another race by making repetitive sounds approximately one minute prior to the warning signal.

4.4 On the second day of the regatta no warning signal will be made after 1430.

5 SAILING INSTRUCTIONS

Sailing Instructions will be posted on the LCYC website and the LCYC clubhouse north-side bulletin board and in print at on-site check-in Friday Sept 23 or the next morning. Any changes to the SIs will be posted at the clubhouse before 0915 on the day they will take effect.

6 RACING AREAS

Depending on wind and wave conditions, racing areas will be within Shelburne Bay where LCYC is located or in Burlington Bay to the north of Shelburne Bay or in the open waters west of Shelburne Point. An attached page shows all areas and the location of LCYC.

7 COURSES

All courses will be windward/leeward with an offset at the windward mark; one to five legs of approximately 0.7 – 1.0 nm; all marks rounded to port. A leeward gate may be used. A course diagram is attached below.

8 PENALTY SYSTEM

8.1 Penalties for the infringement of the rules of Part 2 of the RRS shall be taken in accordance with RRS T1.

8.2 Penalties taken after a race shall be in accordance with RRS T2.

9 SCORING

9.1 The low point scoring system of Appendix A will apply with multiple races scheduled.

9.2 One race will constitute a series. A boat's score for the series will exclude her worst finish if five or more races have been completed. This alters RRS A2.

10 RACE RADIO

The Race Committee will use channel 72 for communication with the fleet.

11 PRIZES

Prizes will be given for first, second, and third place.

12 DISCLAIMER OF LIABILITY

Competitors participate in the regatta entirely at their own risk. See RRS 4, Decision to Race. The Lake Champlain Yacht Club will not accept any liability for material damage or personal injury or death sustained in conjunction with or prior to, during, or after the regatta. A waiver of liability will be required of the owner as part of on-line or in-person Registration.

13 LAUNCHING & BERTHING

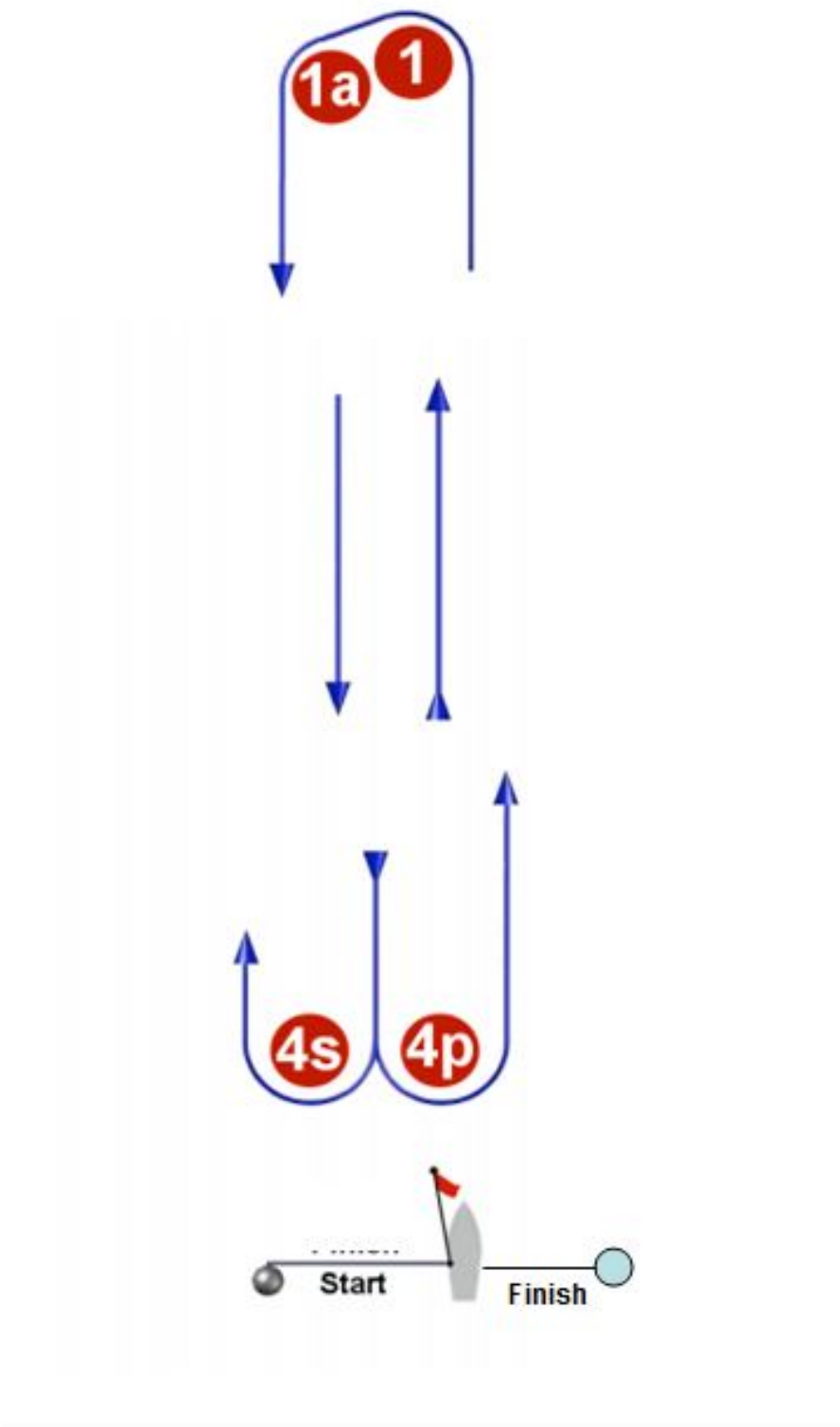
LCYC does not have a hoist, so all boats will be launched at the club's launch ramp, with on-site storage of vehicle and trailer. When not racing, boats will be tied up at the club's docks or put on a member's mooring, unless unruly weather warrants hauling them out.

14 FURTHER INFORMATION

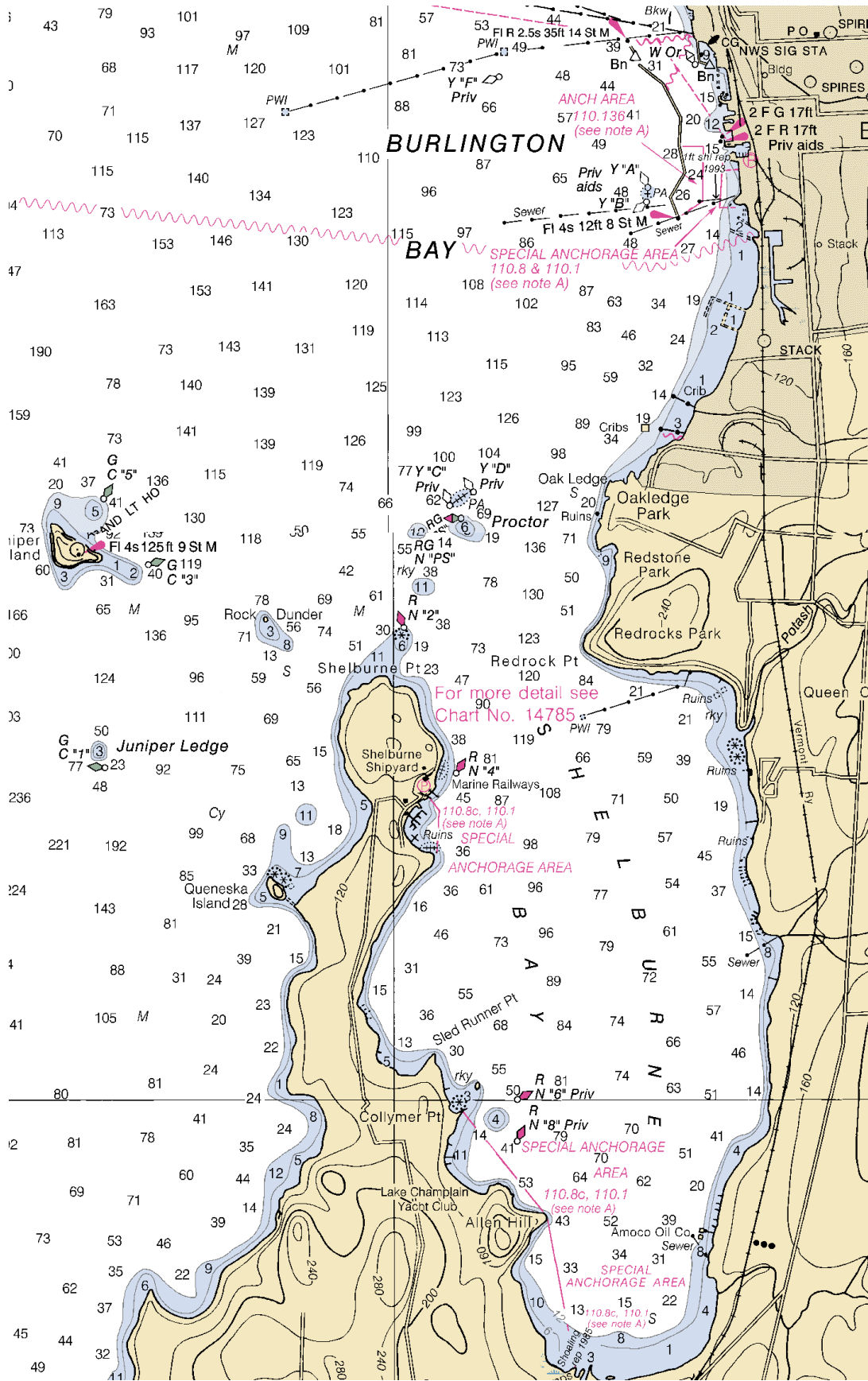
For further information please contact:

Dale Hyerstay
802.999.5930c / 802.425.2800h
dale (at) hyerstay (dot) com

DDH 08/18/16



COURSE DIAGRAM



For more detail see
Chart No. 14785